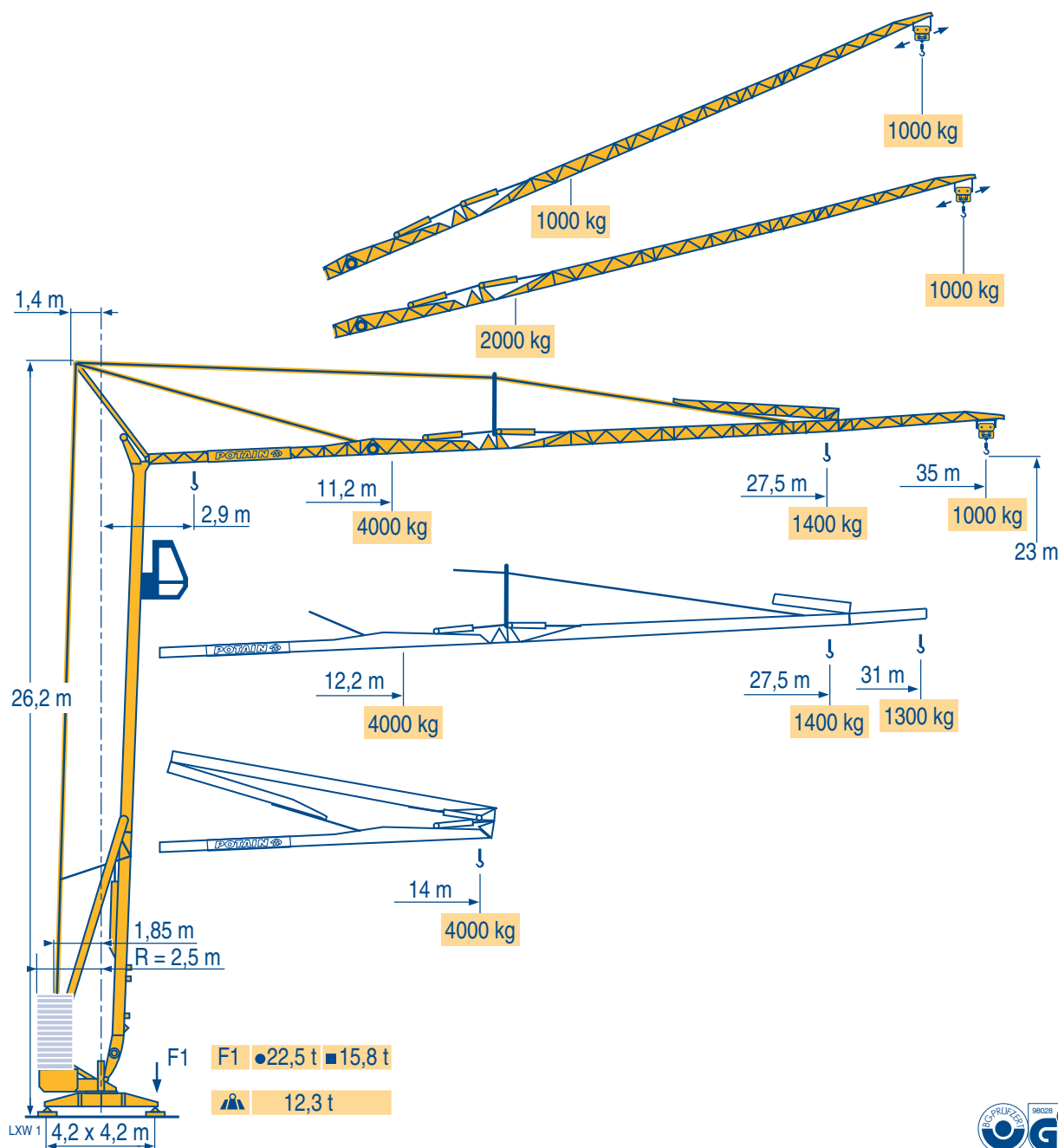




POTAIN

HD 40 A



 FEM 1.001-A3

Manitowoc
Crane Group





Courbes de charges

Lastkurven

Load diagrams

Curvas de cargas

Curve di carico

Curva de cargas

LXW1



35 m 2,9 ▶ 14 m
4000 kg

31 m 2,9 ▶ 14 m
4000 kg



35/31 m 2,9 ▶ 14 m
4000 kg



11,2 12 13 14 15 16 17 18 19 20 22 24 26 28 29 31 33 35 m
4000 3695 3350 3060 2810 2600 2415 2255 2115 1985 1770 1595 1445 1320 1265 1165 1080 1000 kg

12,2 13 14 15 16 17 18 19 20 22 24 26 28 29 31 m
4000 3700 3380 3110 2880 2680 2500 2345 2205 1965 1770 1610 1470 1410 1300 kg



11,6 12 13 14 15 16 17 18 19 20 22 24 26 27,5 m
4000 3820 3460 3165 2910 2690 2500 2335 2190 2060 1835 1650 1500 1400 kg

Flèche relevée

Ausleger in Steilstellung

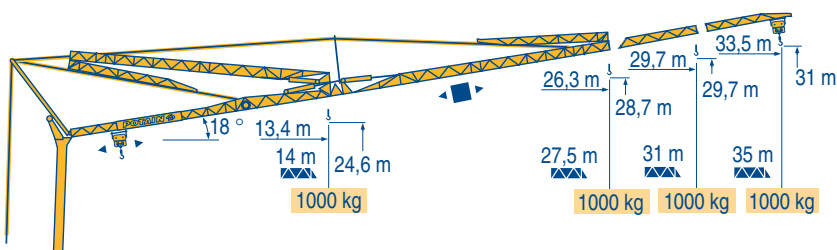
Luffing jib

Flecha izada

Braccio impennato

Lança inclinada

LXW1

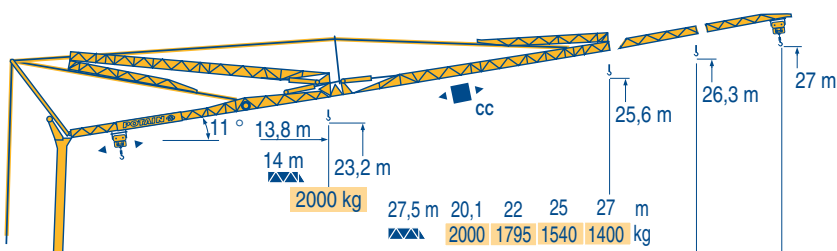


1000 kg

1000 kg

1000 kg

1000 kg



2000 kg

27,5 m

20,1

22

25

27 m

31 m

21,3

22

25

27

30,5 m

35 m

19,6

22

25

27

30

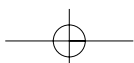
32

34,5 m

HD 40 A



	F	D	GB	E	I	P
	Chariot distributeur	Verfahrbare Laufkatze	Traversing trolley	Carro distribuidor	Carrellino distributore	Carro distribuidor
	Chariot distributeur et courbes de charges	Verfahrbare Laufkatze und Lastkurven	Traversing trolley and load diagrams	Carro distribuidor y curvas de cargas	Carrellino distributore e curve di carico	Carro distribuidor e curva de cargas
	Réactions en service	Reaktionskräfte in Betrieb	Reactions in service	Reacciones en servicio	Reazioni in servizio	Reacções em serviço
	Réactions hors service	Reaktionskräfte außer Betrieb	Reactions out of service	Reacciones fuera de servicio	Reazioni fuori servizio	Reacções fora de serviço
	A vide sans lest (ni train de transport) avec flèche et hauteur maximum.	Ohne Last, Ballast (und Transportachse), mit Maximalausleger und Maximalhöhe.	Without load, ballast (or transport axes), with maximum jib and maximum height.	Sin carga, sin lastre, (ni tren de transporte), flecha y altura máxima.	A vuoto, senza zavorra (ne assali di trasporto) con braccio massimo e altezza massima.	Sem carga (nem trem de transporte)- sem lastro com lança e altura máximas.





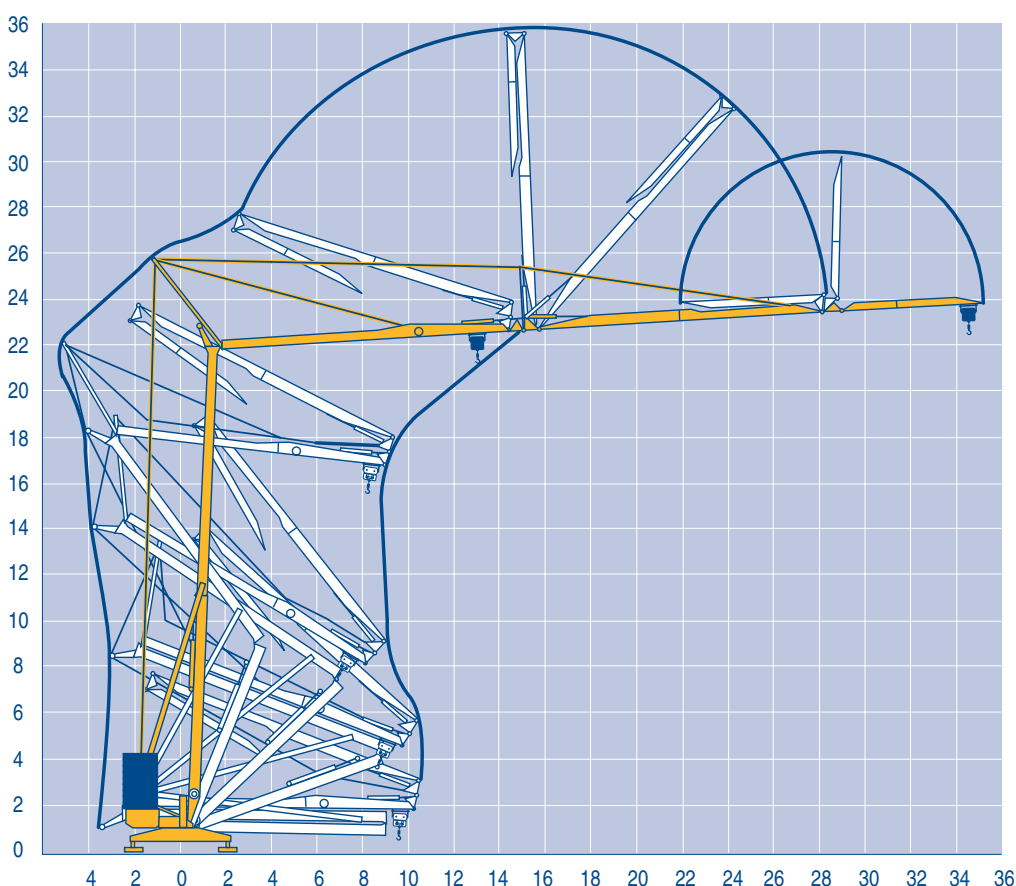
Mécanismes
Antriebe
Mechanisms
Mecanismos
Meccanismi
Mecanismos

LXW 1

											ch - PS hp	kW
	15 LVF 10	m/min	5	27	43	53	2,5	13,5	21,5	26,5	15	11
		kg	2000	2000	1250	1000	4000	4000	2500	2000		
	15 RPC 10	m/min	9	27	54		4,5	13,5	27		15	11
		kg	2000	2000	1000		4000	4000	2000			
	3 D2 V5	m/min	21 - 42								2,7	2
	RVF 2 30	tr/min U/min rpm	0 → 0,2 → 0,8								3	2,2
CEI 38			kVA									
400 V(+6% -10%) 50 Hz			15 LVF 10 : 20 kVA 15 RPC 10 : 20 kVA				2000/14					

Montage
Montage
Erection
Montaje
Montaggio
Montagem

LXW 1



HD 40 A

POTAIN

F



Levage
Distribution
Orientation
Conforme aux directives CEE sur le niveau acoustique

D

Heben
Katzfahren
Schwenken
Gemäss EWG-Richtlinien für den Schall-Leistungspegel

GB

Hoisting
Trolleying
Slewing
In compliance with the EEC Instructions on noise level

E

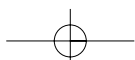
Elevación
Distribución
Orientación
Conforme con las directivas CEE sobre el nivel acústico

I

Sollevamento
Distribuzione
Rotazione
Conforme alle direttive CEE sul livello acustico

P

Elevação
Distribuição
Rotação
Conforme as directivas CEE sobre o nível acústico





Transport
Transport
Transport
Transporte
Trasporto
Transporte

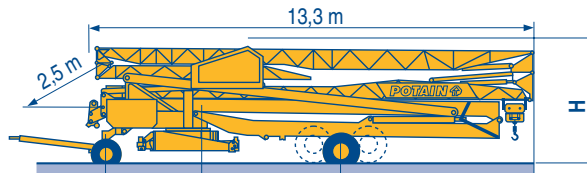
DJ80/S120 ○

DS95/S125

DJ126M/S125

DJ126M/S215M

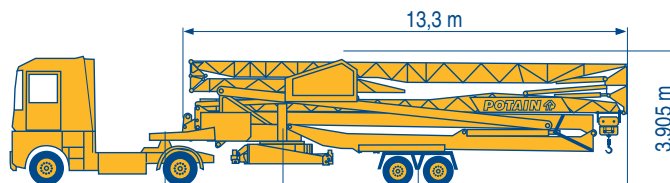
LXW 1



				H
DJ80/S120	2,5 m	4,95 m	5,35 m	3,4/3,55 m
DS95/S125	2,5 m	4,95 m	5,35 m	3,45/3,6 m
DJ126M/S125	3,3 m	4,95 m	5,35 m	3,6 m
DJ126M/S215M	3,3 m	4,425 m	5,875 m	3,94 m

SL122/J215M

SL121/S215M



SL122/J215M	3,4 m	4,425 m	5,875 m
SL121/S215M	3,4 m	4,425 m	5,875 m



F

Chantier

D

Baustelle

GB

Site

E

Obra

I

Cantiere

P

Estaleiro



Document commercial non contractuel. Pour toute information technique se référer à la notice correspondante

Unverbindliches Vertriebsdokument. Für technische Informationen, siehe die entsprechenden Anweisungen.

This commercial document is not legally binding. For any technical information, please refer to the corresponding instructions.

Documento commercial no contractual. Para cualquier información técnica, ver la noticia correspondiente.

Documento commerciale non vincolante, per tutte le informazioni tecniche fare riferimento al catalogo istruzioni

Documento comercial não contratual. Para qualquer informação técnica complementar consultar as respectivas instruções



Manitowoc Crane Group

18, rue de Charbonnières - B.P.173
69132 ECULLY Cedex - France

Tél. : (33) 4 72 18 20 20
Fax. : (33) 4 72 18 20 00
www.manitowoccrane.com www.potain.com



Americas

Tel: +1 920 683 6322
Tel: +1 717 597 8121

Europe - Middle East - Africa

Tel : +(33) 4 72 81 50 00
Tel : +(44) 191 565 6281

Asia - Pacific

Tel: +(65) 6861 7133
Fax: +(65) 6862 4142

www.manitowoccrane.com

HD 40 A

Réf. 2003 48 LXW 1

Copyright.Reproduction interdite © POTAIN 2003

Réalisation HeadLines

